

# Static Cutting Aspirator Heberlein® LufanStat-Cut

Static aspirator and cutter for technical filament yarns and staple-fiber tow

**Cutting aspirator units are built into the threadpath of spinning machines and simplify the operation, reduce waste and increase productivity.**

The units are characterised by their

- Reliability
- Performance
- Economy
- Robustness
- Compactness

They are designed for technical filament yarns, tow and carpet yarns of different fiber raw materials for speeds up to 8'000 m/min and a denier of up to 35'000 dtex.

On request electro-pneumatic controls can be supplied, which start the aspirator units with cutting via an automatic electrical signal or manually through the machine control. This can be triggered after a threadline break, package change or other interruption. The aspiration/cutting function is thus started after a corresponding time delay.

See reverse side for types and technical data.



## Our product range

Air jets  
Aspirating, cutting and splicing units  
Bearings and rollers  
Friction discs  
Friction units  
Spindles

Certified Quality ISO 9001-2000

# Static Cutting Aspirator Heberlein® LufanStat-Cut

## Technical Data

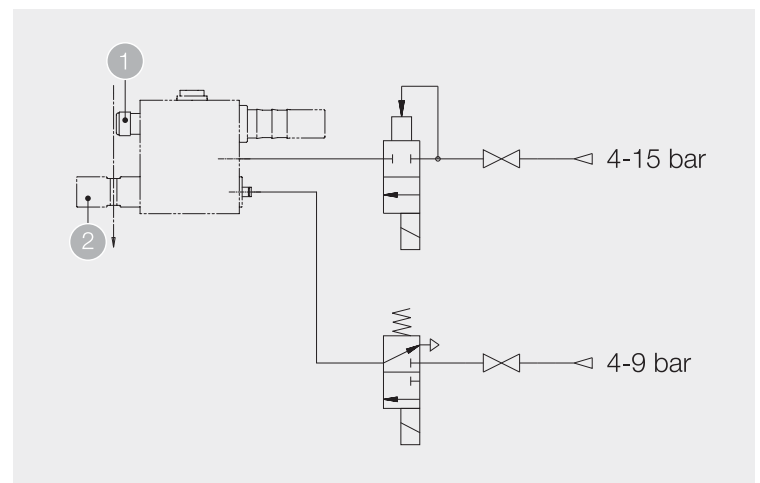
Type	LufanStat-Cut 10/6/2-I100	LufanStat-Cut LC10-I100
Application	Filament yarn spinning plants	Filament and staple-fiber spinning plants
Yarn count [dtex]	15'000	35'000
Gauge pressure $p_e$ [bar] cutting unit	4 - 9	4 - 9
Gauge pressure $p_e$ [bar] aspirating unit	4 - 9	4 - 15
Formula for air consumption [m <sup>3</sup> /h]	$q_{vN} = 12,5 \times (p_e+1)$	$q_{vN} = 38 \times (p_e+1)$
Air connection for cutting unit (plug-in)	ø 6 mm	ø 6 mm
Air connection for aspirating unit	G 1/2	G 3/4 / DN20
Air exhaust connection for aspirating unit	DN20	DN30
Electrical connection machine control signal (option)	24V DC	24V DC
Weight [g]	1'880	2'215

## Compressed air requirements

Gauge pressure:	4 – 15 bar
Max. residual oil content: (2*)	0,1 mg/m <sup>3</sup>
Max. residual particles: (2*)	Particle size 1 µm Particle density 1 mg/m <sup>3</sup>
Max. residual water: (5*)	Residual water 7,732 g/m <sup>3</sup> Dew point + 7 °C

\* Classified according to DIN ISO 8573-1

## Diagram showing connections



1 Aspirating unit  
2 Cutting unit