

Yarn Splicer Heberlein® AirSplicer-70-2

Expanding technological performance limits with a maximum lifespan

The Heberlein® AirSplicer-70-2 with high performance Phoenix knives for up to 18,000 cuts, enables the best splicing quality with flat, clean bound yarn ends and highest strength.

Splicing of multifilament yarns

During splicing the ends of two yarns are intermingled using compressed air. The resulting join exhibits high uniformity and 75 - 100% of the base yarn strength.

In contrast with a knotted join, a splice causes less problems in the following processes, since a smoother yarn is the result.

Area of Application

Recommended for the semi-automatic, knot free joining of technical yarns and high modulus fibers such as aramid, Dyneema®, carbon fibers, Zylon® and glass fiber yarns.

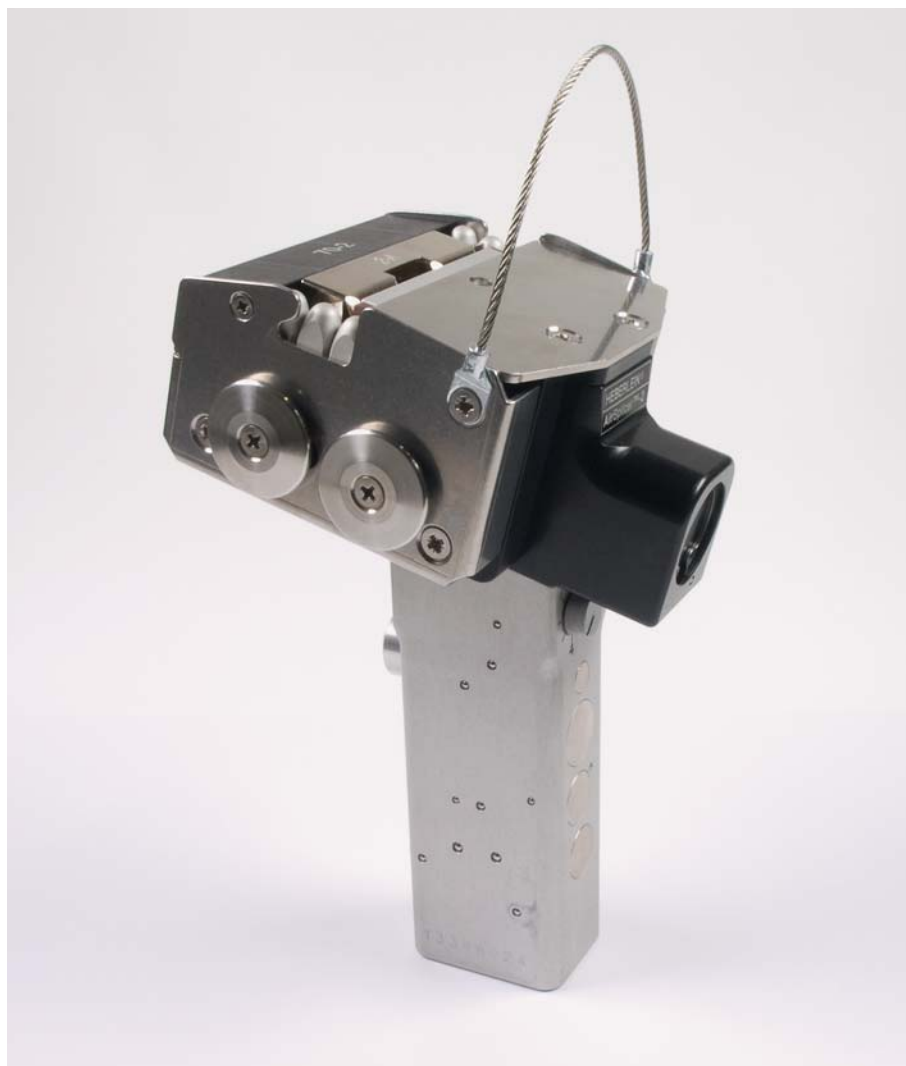
Product Benefits

During proper application the useful life of the Phoenix high performance knife is around 18,000 cuts. This corresponds with an extension of the useful life by a factor of 20 (Basis: Aramid 8050 f 6000 dtex).

The robust design of the splicer guarantees problem-free operation, even under severe conditions with the highest splicing quality and longest lifespan.

The automatic splicing cycle, independent of the operator, serves to ensure high and reproducible splice quality.

The retrofitting of existing units (III-70) with Phoenix knife sets is possible without a second thought. We recommend the conversion to be carried out by an authorised service centre.



Handling

The splicing time ranges from 0.5 - 2 seconds and is dependant on the material and pressure. It can be set freely according to requirements.

The strap that is fitted to the housing as a standard can be used to hang the splicer on the creel frame.

Service

For long term cutting tests with new types of fibre our splicing robot with original unit is available. For further information please apply to our customer service department.

Yarn Splicer Heberlein® AirSplicer-70-2

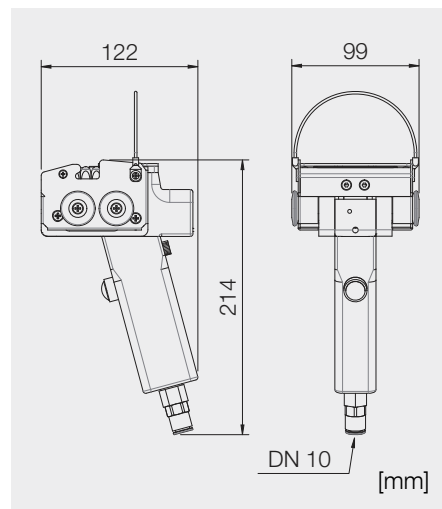
Range of Application

Typ ¹⁾	Aramid fibers [dtex]	Carbon fibers [dtex]	Dyneema® [dtex]	Synthetic filament yarns [dtex]	Glass fibers [tex]
2-G	- 420	- 400			
2-F	- 1'260	- 1'000			
2-E	- 1'680	- 1'500	- 800		
2-D	- 3'360	- 3'500	- 1'200		
2-C	- 6'720	- 5'000	- 1'800		
2-B	- 8'400	- 8'000	- 2'500		
2-A	- 10'000	- 12'000	- 4'000		
2-0	- 12'000	- 18'000	- 5'500		
2-1	- 14'000	- 24'000			
2-2	- 16'000	- 30'000			
0				- 17'000	- 2'400
1				- 26'000	- 3'600
2				- 35'000	- 4'800

1 Splicing jet insert (Blowing chamber)

For optimal splicing results the choice of the correct blow chamber, the time of splicing, as well as the air pressure applied corresponding with the type and fineness of the yarn is important. For special demands we offer optimisation trials with your yarns without charge. The strength of spliced standard yarns is 75 - 100% of the strength of the base yarn.

Dimensions and Weights



Weight 1'445 g

Compressed Air Requirements

Air pressure (gauge): 4 – 8 bar

Max. residual oil: 0,1 mg/m³ (2*)

Max. residual particles: (2*)

– Particle size 1 µm

– Particle density 1 mg/m³

Max. residual water: (5*)

– Residual water 7,732 g/m

– Dew point + 7 °C

* According to DIN ISO 8573-1 quality

Accessories



Stands with foot or hand activation switch